

**NORLER** 

[www.norlertools.com](http://www.norlertools.com)





# About Us

NORLER is a Chinese diamond tools company committed to offering the wide range of quality diamond tools for cutting, coring, grinding and polishing, all types of construction and stone products, Our wide range includes Diamond Saw Blades, Diamond Core Drill Bits, Diamond Grinding Cup Wheels, Diamond Polishing Pads and Diamond Tools for Surface Preparation.

As an experienced supplier with over the years in professional field, we are very proud to recommend our premium diamond tools to the market. Our sinter diamond blade which is best all round blade for DIY market provide fast, free and smooth cutting. Our laser welded diamond saw blade which is the greatest quality, it designed with the high diamond concentration, provides more faster and longer life time, also with features of safety and reliable cuttings to the users. To use with our metal bond diamond grinding tools will give you fast cutting and more aggressive on heavy duty floors, let you spend less time on site and save budget;

Our products are exported to Europe, USA, Australia, Middle East and Asia, etc; We offer a powerful technology team, advanced production line and inspection equipment; ISO9001-2000 quality control system and ISO14001-2004 environment system is we strictly conform to; EN standard is which we follows in inspection between processes.

Today, we continue to design, develop and manufacture, offering the widest diamond tools in the international market. Our dedication to a firm policy of customer care and customer satisfaction has achieved progressive and constant growth with good reputation for reliability and excellence.

We welcome any questions and inquiries you have, if you do not see what you need in our catalogue or website, please contact us at [info@norlertools.com](mailto:info@norlertools.com) we can help you.



# Customer Reading

So far, NORLER main offering Diamond Saw Blades, Diamond Core Drill Bits, Diamond Grinding Cup Wheels, Diamond Polishing Pads and Diamond Tools for Surface Preparation.

## Diamond Saw Blades

NORLER provides types of sintered diamond blade, laser welded diamond saw blade and stone saw blade.

Sintered diamond blade which is an economical blade for small amount of cutting works, this kind saw blade is by cold press or hot press sintered, size main below 400mm diameter, it is basic line general purpose blade for fast cutting concrete, tile, brick, granite, marble, etc. materials, to fit the equipment like angle grinders, circular saws and table saws etc, the type includes segmented rim blade, continuous rim blade and turbo rim blade.

Laser welded diamond saw blade, as the name implies which it is by laser welding technology, the benefits of laser welded diamond saw blade which as following:

- Stronger adhesion of the diamond segments to the steel core
- Longer life and cut faster than sintered diamond blades
- Instead of traditional brazed diamond saw blades, as the diamond segment tend not be broken or fall off from the steel core
- Dry cutting work under the harsh condition
- Safety and reliability to the users

Besides above, the size can be made up to diameter 900mm and even more larger, that which sintered diamond blades can not to be achieved now, the blades fit to most handed saws and walk behind floor saws. And the types included general purpose saw blade, cured concrete saw blade, reinforced concrete saw blade, asphalt and green concrete saw blade, wall saw blade, etc. main in construction cutting products.

Our laser welded diamond saw blades are manufactured by using the best machine Dr. Fritsch which Germany brand, this good brand machine enable to turn out constant higher quality and safety products.

Stone Saw Blade, NORLER main focus on granite saw blade, marble saw blade and ceramic saw blade, those best blades provide high efficiency, precision and chip-free performance



# Diamond Tools for Surface Preparation

It is a fast growing industrial diamond tools for surface preparation, NORLER realized it is urgent needed in servicing Surface Preparation sector, with many years effort we done very successfully.

We now bring out the products range covers:

Bolt on type trapezoid grinding plates, quick change type metal bond grinding tools, 10" floor grinding heads, PCD grinding plates, grinding pucks, grinding plugs, diamond grinding cup wheels, diamond polishing pads and other tools etc.

They are used for grinding and polishing concrete, stones or removal of paint, glue, epoxy and other floor coating, etc materials; To use on handed grinders and floor grinders.

According to the different floors, we define our metal bond grinding tools have soft bond, medium bond and hard bond; Soft bond which for using on grinding hard floors, medium bond for general purpose and hard bond for using on grinding soft floors. The grit size we offering by #16/20, #30/40, #60/80, #120/150. Then the coarse size such as grit #16/20 for material removal in the initial starting, the grit #30/40 for rough grinding, grit #60/80 for medium grinding, grit #120/150 for fine grinding.

Whilst, our diamond floor polishing pads provided remove scratch quickly, high-gloss finish and never stain the floor after polishing.



# CONTENTS

## CONSTRUCTION

1.SINTERED DIAMOND BLADES	01
2.LASER WELDED DIAMOND SAW BLADES	06
3.DIAMOND CORE DRILL BITS	10
4.DIAMOND GRINDING CUP WHEELS	11
5.RESCUE BLADES	13

## STONE

1.STONE DIAMOND SAW BLADES	14
2.DIAMOND POLISHING PADS	15
3.DIAMOND CORE BITS	16
4.PROFILE WHEELS	17

## SURFACE PREPARATION

1.DIAMOND GRINDING PLATES	18
2.DIAMOND GRINDING PUCKS	31
3.DIAMOND GRINDING PLUGS	33
4.FLOOR POSLISHING PADS	35
5.OTHERS PARTS	37

# CONSTRUCTION

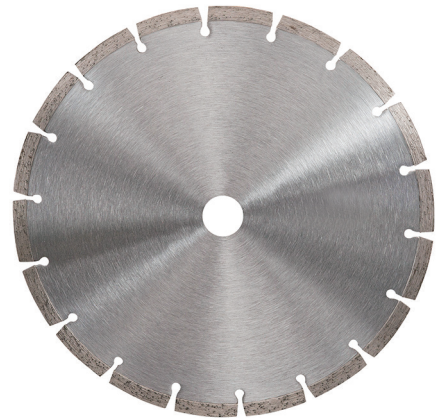
## 1. SINTERED DIAMOND BLADES

Sintered Diamond Blades which is an economical blade for small amount of cutting works, this kind saw blade is by cold press or hot press sintered, size main below 400mm diameter, it is basic line general purpose blade for fast cutting concrete, tile, brick, granite, marble, etc. materials, to fit the equipment like angle grinders, circular saws and table saws etc, the type includes segmented rim blade, continuous rim blade and turbo rim blade.

### 1.1 Segmented Rim Diamond Blade

A general purpose blade for a wide range of materials, such as masonry, bricks, blocks, slate, stone and concrete, etc.

Diameter	Thickness(mm)	Height(mm)	Code
4"(105mm)	1.8	7/10	SIN 0105 SEG
4.5"(115mm)	1.9	7/10	SIN 0115 SEG
5"(125mm)	1.9	7/10	SIN 0125 SEG
6"(150mm)	2.0	7/10	SIN 0150 SEG
7"(180mm)	2.2	7/10	SIN 0180 SEG
8"(200mm)	2.4	7/10	SIN 0200 SEG
9"(230mm)	2.6	7/10	SIN 0230 SEG
10"(250mm)	2.6	7/10	SIN 0250 SEG
12"(300mm)	3.2	7/10	SIN 0300 SEG
14"(350mm)	3.2	7/10	SIN 0350 SEG
16"(400mm)	3.6	7/10	SIN 0400 SEG



### 1.2 Continuous Rim Diamond Blade

Fast cutting for tile, ceramic, granite, marble and other stone materials, it always perform clean, chip-free cutting.

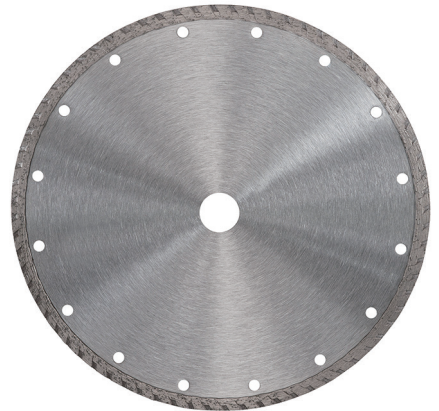
Diameter	Thickness(mm)	Height(mm)	Code
4"(105mm)	1.8	5/7/10	SIN 0105 CON
4.5"(115mm)	1.9	5/7/10	SIN 0115 CON
5"(125mm)	1.9	5/7/10	SIN 0125 CON
6"(150mm)	2.0	5/7/10	SIN 0150 CON
7"(180mm)	2.2	5/7/10	SIN 0180 CON
8"(200mm)	2.4	5/7/10	SIN 0200 CON
9"(230mm)	2.6	5/7/10	SIN 0230 CON
10"(250mm)	2.6	5/7/10	SIN 0250 CON
12"(300mm)	3.2	5/7/10	SIN 0300 CON
14"(350mm)	3.2	5/7/10	SIN 0350 CON
16"(400mm)	3.6	5/7/10	SIN 0400 CON



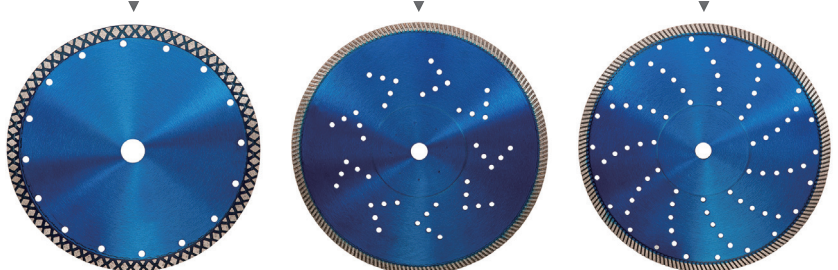
### 1.3 Turbo Rim Diamond Blade

The turbo rim type diamond blade gives an air cooling effect during cutting and also it helps speed up the process without chipping. Continuous turbo rim provide safe and fast smooth cutting works. It offers fast cutting various construction materials, such as concrete products, brick, block, hard granite, clay, cement roof tile, limestone, sandstone, etc materials at competitive cost.

Diameter	Thickness(mm)	Height(mm)	Code
4"(105mm)	2.0	7/10	SIN 0105 TUR
4.5"(115mm)	2.2	7/10	SIN 0115 TUR
5"(125mm)	2.2	7/10	SIN 0125 TUR
6"(150mm)	2.3	7/10	SIN 0150 TUR
7"(180mm)	2.4	7/10	SIN 0180 TUR
8"(200mm)	2.6	7/10	SIN 0200 TUR
9"(230mm)	2.8	7/10	SIN 0230 TUR
10"(250mm)	2.8	7/10	SIN 0250 TUR
12"(300mm)	3.4	7/10	SIN 0300 TUR
14"(350mm)	3.4	7/10	SIN 0350 TUR
16"(400mm)	3.8	7/10	SIN 0400 TUR



Diameter	Thickness(mm)	Height(mm)	Code	Height(mm)	Code	Height(mm)	Code
4"(105mm)	2.0	10	SIN 0105 TRX	10/12	SIN 0105 TRA	10/12	SIN 0105 TRS
4.5"(115mm)	2.2	10	SIN 0115 TRX	10/12	SIN 0115 TRA	10/12	SIN 0115 TRS
5"(125mm)	2.2	10	SIN 0125 TRX	10/12	SIN 0125 TRA	10/12	SIN 0125 TRS
6"(150mm)	2.3	10	SIN 0150 TRX	10/12	SIN 0150 TRA	10/12	SIN 0150 TRS
7"(180mm)	2.4	10	SIN 0180 TRX	10/12	SIN 0180 TRA	10/12	SIN 0180 TRS
8"(200mm)	2.6	10	SIN 0200 TRX	10/12	SIN 0200 TRA	10/12	SIN 0200 TRS
9"(230mm)	2.8	10	SIN 0230 TRX	10/12	SIN 0230 TRA	10/12	SIN 0230 TRS
10"(250mm)	2.8	10	SIN 0250 TRX	10/12	SIN 0250 TRA	10/12	SIN 0250 TRS
12"(300mm)	3.2	10	SIN 0300 TRX	10/12	SIN 0300 TRA	10/12	SIN 0300 TRS
14"(350mm)	3.2	10	SIN 0350 TRX	10/12	SIN 0350 TRA	10/12	SIN 0350 TRS





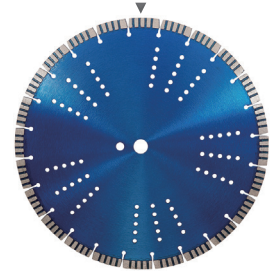
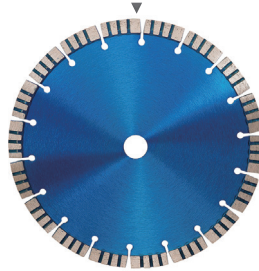
## 1.4 Segmented Turbo Diamond Blade

Segmented Turbo rim diamond blade is designed for better cooling and better dust removal, ensure a fast cutting speed. It offers general purpose cut, and medium hard concrete, reinforced concrete, universal masonry, medium hard granite, most civil engineering materials.

Diameter	Thickness(mm)	Height(mm)
4"(105mm)	2.0	10
4.5"(115mm)	2.2	10
5"(125mm)	2.2	10
6"(150mm)	2.3	10
7"(180mm)	2.4	10
8"(200mm)	2.6	10
9"(230mm)	2.8	10
10"(250mm)	2.8	10
12"(300mm)	3.2	10
14"(350mm)	3.2	10

Code
SIN 0105 STA
SIN 0115 STA
SIN 0125 STA
SIN 0150 STA
SIN 0180 STA
SIN 0200 STA
SIN 0230 STA
SIN 0250 STA
SIN 0300 STA
SIN 0350 STA

Code
SIN 0105 STB
SIN 0115 STB
SIN 0125 STB
SIN 0150 STB
SIN 0180 STB
SIN 0200 STB
SIN 0230 STB
SIN 0250 STB
SIN 0300 STB
SIN 0350 STB

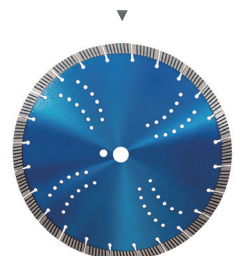
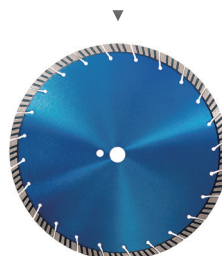
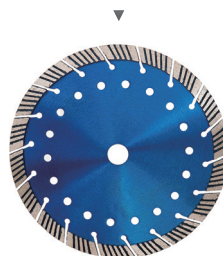


Diameter	Thickness(mm)	Height(mm)
4"(105mm)	2.0	10
4.5"(115mm)	2.2	10
5"(125mm)	2.2	10
6"(150mm)	2.3	10
7"(180mm)	2.4	10
8"(200mm)	2.6	10
9"(230mm)	2.8	10
10"(250mm)	2.8	10
12"(300mm)	3.2	10
14"(350mm)	3.2	10

Code
SIN 0105 STC
SIN 0115 STC
SIN 0125 STC
SIN 0150 STC
SIN 0180 STC
SIN 0200 STC
SIN 0230 STC
SIN 0250 STC
SIN 0300 STC
SIN 0350 STC

Code
SIN 0105 STD
SIN 0115 STD
SIN 0125 STD
SIN 0150 STD
SIN 0180 STD
SIN 0200 STD
SIN 0230 STD
SIN 0250 STD
SIN 0300 STD
SIN 0350 STD

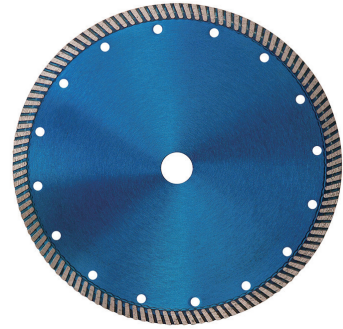
Code
SIN 0105 STE
SIN 0115 STE
SIN 0125 STE
SIN 0150 STE
SIN 0180 STE
SIN 0200 STE
SIN 0230 STE
SIN 0250 STE
SIN 0300 STE
SIN 0350 STE



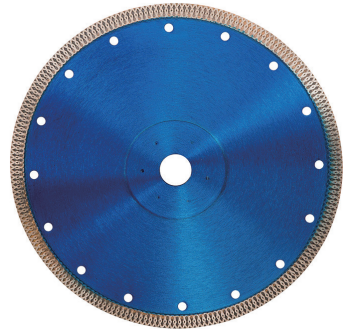
## 1.5 Thin Turbo Rim Diamond Blade

Thin turbo rim and thin continuous embossed rim diamond blade is specially designed for professional users to cut tiles in clean and chip free.

Diameter	Thickness(mm)	Height(mm)	Code
4"(105mm)	1.2	10	SIN 0105 TSR
4.5"(115mm)	1.4	10	SIN 0115 TSR
5"(125mm)	1.4	10	SIN 0125 TSR
7"(180mm)	1.8	10	SIN 0180 TSR
9"(230mm)	2.0	10	SIN 0230 TSR



Diameter	Thickness(mm)	Height(mm)	Code
4"(105mm)	1.2	10	SIN 0105 TYR
4.5"(115mm)	1.4	10	SIN 0115 TYR
5"(125mm)	1.4	10	SIN 0125 TYR
7"(180mm)	1.8	10	SIN 0180 TYR
9"(230mm)	2.0	10	SIN 0230 TYR



Diameter	Thickness(mm)	Height(mm)	Code
4"(105mm)	1.2	10	SIN 0105 TZR
4.5"(115mm)	1.4	10	SIN 0115 TZR
5"(125mm)	1.4	10	SIN 0125 TZR
7"(180mm)	1.8	10	SIN 0180 TZR
9"(230mm)	2.0	10	SIN 0230 TZR



## 1.6 Tuck Point Blade

Tuck point blade is efficient to cut and remove concrete, mortar and tarmac.

Diameter	Thickness(mm)	Height(mm)	Code
4"(105mm)	6.4	10	SIN 0105 SAN2
4.5"(115mm)	6.4	10	SIN 0115 SAN2
5"(125mm)	6.4	10	SIN 0125 SAN2
7"(180mm)	6.4	10	SIN 0180 SAN2



Diameter	Thickness(mm)	Height(mm)	Code
4"(105mm)	9.5	10	SIN 0105 SAN3
4.5"(115mm)	9.5	10	SIN 0115 SAN3
5"(125mm)	9.5	10	SIN 0125 SAN3
7"(180mm)	9.5	10	SIN 0180 SAN3



Diameter	Thickness(mm)	Height(mm)	Code
4"(105mm)	6.4/10	7/10	SIN 0105 TUC
4.5"(115mm)	6.4/10	7/10	SIN 0115 TUC
5"(125mm)	6.4/10	7/10	SIN 0125 TUC
7"(180mm)	6.4/10	7/10	SIN 0180 TUC



Diameter	Thickness(mm)	Height(mm)	Code
4.5"(115mm)	6.4	7	SIN 0115 CRA
9"(230mm)	6.4	7	SIN 0230 CRA



## 2.LASER WELDED DIAMOND SAW BLADES

Laser welded diamond saw blades have a longer life and cut faster than sintered diamond blades, it provides safety and reliable cuttings to the users.

The size can be made up to diameter 900mm and even more larger, that which sintered diamond blades can not to be achieved now, the blades fit to most handed saws and walk behind floor saws. And the types included general purpose saw blade, cured concrete saw blade, reinforced concrete saw blade, asphalt and green concrete saw blade, wall saw blade, etc.

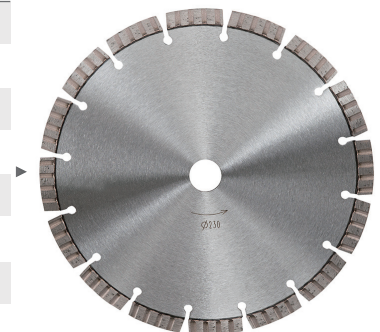
### 2.1 Diamond Saw Blade for General Purpose

It is best general purpose saw blade on the market designed to cut most materials, like general concrete materials, bricks, block, slate, sandstone, granite, tile and refractory materials, etc. It provides long life free cutting.

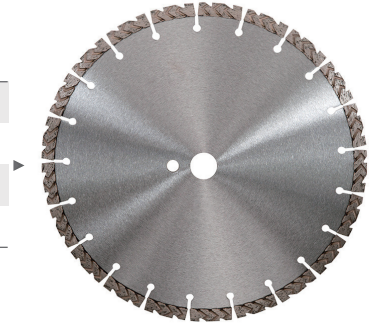
Diameter	Length(mm)	Thickness(mm)	Height(mm)	Code
4.5"(115mm)	32	2.4	10	LAS 0115 SEG
5"(125mm)	32	2.4	10	LAS 0125 SEG
6"(150mm)	32	2.4	10	LAS 0150 SEG
7"(180mm)	32	2.4	10	LAS 0180 SEG
9"(230mm)	38	2.6	10	LAS 0230 SEG
12"(300mm)	40	3.2	10	LAS 0300 SEG
14"(350mm)	40	3.2	10	LAS 0350 SEG



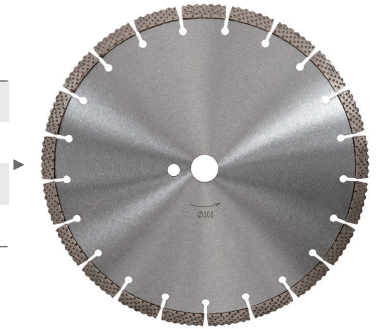
Diameter	Length(mm)	Thickness(mm)	Height(mm)	Code
4.5"(115mm)	32	2.4	10	LAS 0115 TUR
5"(125mm)	32	2.4	10	LAS 0125 TUR
6"(150mm)	32	2.4	10	LAS 0150 TUR
7"(180mm)	32	2.4	10	LAS 0180 TUR
9"(230mm)	38	2.6	10	LAS 0230 TUR
12"(300mm)	40	3.2	10	LAS 0300 TUR
14"(350mm)	40	3.2	10	LAS 0350 TUR



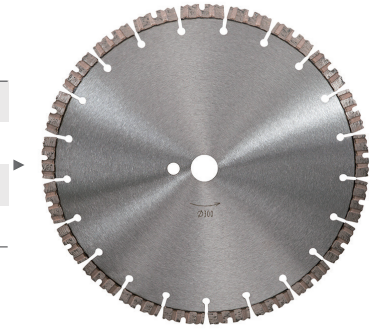
Diameter	Length(mm)	Thickness(mm)	Height(mm)	Code
9"(230mm)	38	2.6	12	LAS 0230 ARR
12"(300mm)	40	3.2	12	LAS 0300 ARR
14"(350mm)	40	3.2	12	LAS 0350 ARR



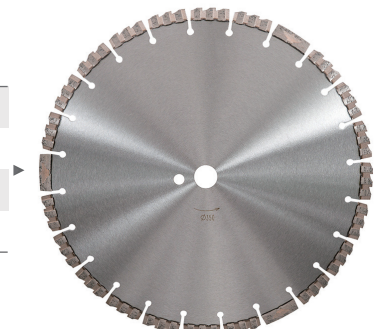
Diameter	Length(mm)	Thickness(mm)	Height(mm)	Code
9"(230mm)	38	2.6	12	LAS 0230 DOT
12"(300mm)	40	3.2	12	LAS 0300 DOT
14"(350mm)	40	3.2	12	LAS 0350 DOT



Diameter	Length(mm)	Thickness(mm)	Height(mm)	Code
9"(230mm)	38	2.6	12	LAS 0230 PEK
12"(300mm)	40	3.2	12	LAS 0300 PEK
14"(350mm)	40	3.2	12	LAS 0350 PEK



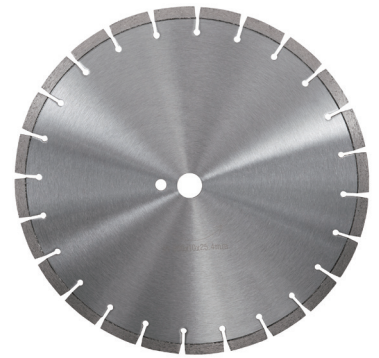
Diameter	Length(mm)	Thickness(mm)	Height(mm)	Code
9"(230mm)	38	2.6	12	LAS 0230 EGL
12"(300mm)	40	3.2	12	LAS 0300 EGL
14"(350mm)	40	3.2	12	LAS 0350 EGL



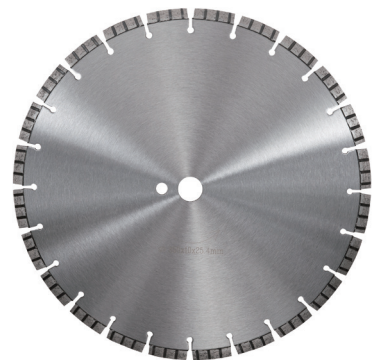
## 2.2 Diamond Saw Blade for Concrete

It is designed for best performance in concrete pavement cutting, with good speed and long life on any of cured concrete, reinforced concrete.

Diameter	Length(mm)	Thickness(mm)	Height(mm)	Code
12"(300mm)	40	3.2	10/12	LAS 0300 SEG
14"(350mm)	40	3.2	10/12	LAS 0350 SEG
16"(400mm)	40	3.4	10/12	LAS 0400 SEG
18"(450mm)	40	3.6	10/12	LAS 0450 SEG
20"(500mm)	40	3.6	10/12	LAS 0500 SEG
24"(600mm)	40	4.0	10/12	LAS 0600 SEG
26"(650mm)	40	4.2	10/12	LAS 0650 SEG
28"(700mm)	40	4.6	10/12	LAS 0700 SEG
30"(750mm)	40	4.6	10/12	LAS 0750 SEG
32"(800mm)	40	4.8	10/12	LAS 0800 SEG
36"(900mm)	40	4.8	10/12	LAS 0900 SEG
40"(1000mm)	40	4.8	10/12	LAS 1000 SEG
44"(1100mm)	40	4.8	10/12	LAS 1100 SEG
48"(1200mm)	40	4.8	10/12	LAS 1200 SEG



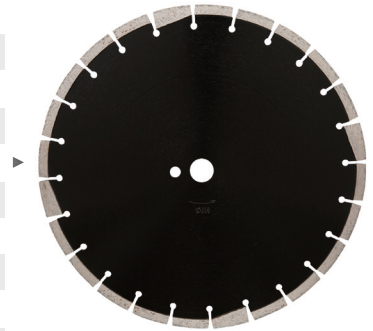
	Length(mm)	Thickness(mm)	Height(mm)	Code
12"(300mm)	40	3.2	10/12	LAS 0300 TUR
14"(350mm)	40	3.2	10/12	LAS 0350 TUR
16"(400mm)	40	3.4	10/12	LAS 0400 TUR
18"(450mm)	40	3.6	10/12	LAS 0450 TUR
20"(500mm)	40	3.6	10/12	LAS 0500 TUR
24"(600mm)	40	4.0	10/12	LAS 0600 TUR



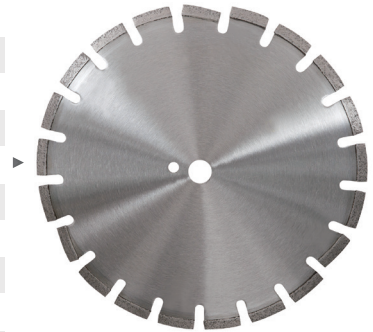
### 2.3 Diamond Saw Blade for Asphalt/Green Concrete

It is designed for cutting abrasive materials, like asphalt, green concrete, asphalt over concrete, tarmac. And it is provided with undercut protection design of like wedge segment, slant segment, drop- segment, diamond insert, etc.

Diameter	Length(mm)	Thickness(mm)	Height(mm)	Code
12"(300mm)	40	3.2	10/12	LAS 0300 ASP-W
14"(350mm)	40	3.2	10/12	LAS 0350 ASP-W
16"(400mm)	40	3.4	10/12	LAS 0400 ASP-W
18"(450mm)	40	3.6	10/12	LAS 0450 ASP-W
20"(500mm)	40	3.6	10/12	LAS 0500 ASP-W
24"(600mm)	40	4.0	10/12	LAS 0600 ASP-W
26"(650mm)	40	4.2	10/12	LAS 0650 ASP-W
28"(700mm)	40	4.6	10/12	LAS 0700 ASP-W
32"(800mm)	40	4.8	10/12	LAS 0800 ASP-W
36"(900mm)	40	4.8	10/12	LAS 0900 ASP-W



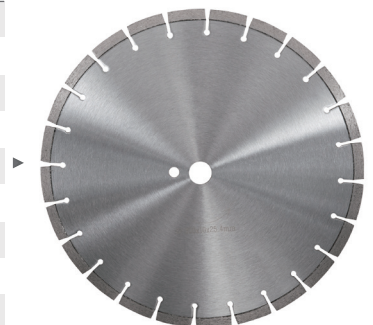
Diameter	Length(mm)	Thickness(mm)	Height(mm)	Code
12"(300mm)	40	3.2	10/12	LAS 0300 ASP-S
14"(350mm)	40	3.2	10/12	LAS 0350 ASP-S
16"(400mm)	40	3.4	10/12	LAS 0400 ASP-S
18"(450mm)	40	3.6	10/12	LAS 0450 ASP-S
20"(500mm)	40	3.6	10/12	LAS 0500 ASP-S
24"(600mm)	40	4.0	10/12	LAS 0600 ASP-S
26"(650mm)	40	4.2	10/12	LAS 0650 ASP-S
28"(700mm)	40	4.6	10/12	LAS 0700 ASP-S
32"(800mm)	40	4.8	10/12	LAS 0800 ASP-S
36"(900mm)	40	4.8	10/12	LAS 0900 ASP-S



### 2.4 Diamond Saw Blade for Wall Saws

It is designed for fast cutting hard concrete wall, heavily reinforced concrete, and bridge deck, etc.

Diameter	Length(mm)	Thickness(mm)	Height(mm)	Code
24"(600mm)	40	4.8	10/12	LAS 0600 WAL
26"(650mm)	40	4.8	10/12	LAS 0650 WAL
28"(700mm)	40	4.8	10/12	LAS 0700 WAL
32"(800mm)	40	4.8	10/12	LAS 0800 WAL
36"(900mm)	40	4.8	10/12	LAS 0900 WAL
40"(1000mm)	40	4.8	10/12	LAS 1000 WAL
44"(1100mm)	40	4.8	10/12	LAS 1100 WAL
48"(1200mm)	40	4.8	10/12	LAS 1200 WAL



### 3. DIAMOND CORE DRILL BITS

#### 3.1 Diamond Wet Core Bit

It is an excellent wet core bit we have, application from heavy reinforced concrete to asphalt.

Diameter(mm)	Drill Depth(mm)	Height(mm)	Code
25	400	10	W-DB 25
27	400	10	W-DB 27
32	400	10	W-DB 32
36	400	10	W-DB 36
38	400	10	W-DB 38
42	400	10	W-DB 42
46	400	10	W-DB 46
52	400	10	W-DB 52
56	400	10	W-DB 56
63	400	10	W-DB 63
67	400	10	W-DB 67
72	400	10	W-DB 72
76	400	10	W-DB 76
83	400	10	W-DB 83
92	400	10	W-DB 92
102	400	10	W-DB 102
108	400	10	W-DB 108
114	400	10	W-DB 114
122	400	10	W-DB 122
127	400	10	W-DB 127
132	400	10	W-DB 132
142	400	10	W-DB 142
152	400	10	W-DB 152
160	400	10	W-DB 160
165	400	10	W-DB 165
172	400	10	W-DB 172
180	400	10	W-DB 180
200	400	10	W-DB 200
215	400	10	W-DB 215
230	400	10	W-DB 230
250	400	10	W-DB 250
254	400	10	W-DB 254
305	400	10	W-DB 305
355	400	10	W-DB 355



Different designs of segment are available



Ring



Flat



Turbo



Roof



## 4. DIAMOND GRINDING CUP WHEELS

Diamond grinding cup wheels are designed for efficient grinding concrete, stones, and removal of paint, glue and other floor coatings, etc materials, fit to angle grinders and floor grinders.

### 4.1 Single Row Grinding Cup Wheel

Row type grinding cup wheels are an excellent and economical way to grind a variety of hard materials such as concrete, stone and masonry; Use Single Row Grinding Cup Wheels for rough work and rapid stock removal.

Diameter	Segments	Code
4"(105mm)	8	DGW 105 SR
5"(125mm)	10	DGW 125 SR
7"(180mm)	12	DGW 180 SR

Segment Height:5mm



### 4.2 Double Row Grinding Cup Wheel

Use double row grinding cup wheels for finer finishing.

Diameter	Segments	Code
4"(105mm)	12	DGW 105 DR
5"(125mm)	20	DGW 125 DR
7"(180mm)	24	DGW 180 DR

Segment Height:5mm



### 4.3 Turbo Row Grinding Cup Wheel

Turbo row grinding cup wheels give fast, aggressive removal of concrete etc materials, with multi-hole metal body, gives cooling and reduce heat while grinding, reach at optimum performance.

Diameter	Segments	Code
5"(125mm)	18	DGW 125 TR
7"(180mm)	12	DGW 180 TR
7"(180mm)	24	DGW 180 TR

Segment Height:5/10mm



### 4.4 Arrow Segment Grinding Cup Wheel

Arrow segment grinding cup wheels are designed to provide the operator with fast production rates and long life, the segment is slanted at an angle away from the core of the cup wheel, this allows the segment to scrape and grind at the same time.

Diameter	Segments	Code
4"(105mm)	5	DGW 105 AR
5"(125mm)	6	DGW 125 AR
7"(180mm)	10	DGW 180 AR

Segment Height:8mm



### 4.5 R3 Grinding Cup Wheel

R3 grinding cup wheels give excellent grinding, high cutting efficiency for aggressive surface preparation, with the large air hole design improves cooling and dust evacuation.

Diameter	Segments	Code
7"(180mm)	3	DGW 105 R3
7"(180mm)	9	DGW 125 R3
7"(180mm)	18	DGW 180 R3

Segment Height:5/10mm



## 4.6 T-Segment Grinding Cup Wheel

T-Segment grinding cup wheels are used for cleaning, thin coating removal, edging and concrete leveling.

Diameter	Segments	Code
5"(125mm)	10	DGW 125 TS
7"(180mm)	14	DGW 180 TS

Segment Height:5mm



## 4.7 PCD Grinding Cup Wheel

PCD grinding cup wheels are designed for the quick removal of the thick coating of epoxy, glue, paint and resin on concrete floors, these tools provide a smooth finish to any concrete surface and works much faster than general metal bond diamond grinding tools.

Diameter	Segments	Code
5"(125mm)	9	PCW 125 TC
7"(180mm)	12	PCW 180 TC



Diameter	Segments	Code
4"(105mm)	5	PCW 105 HC
5"(125mm)	6	PCW 125 HC
7"(180mm)	6	PCW 180 HC



## 4.8 Floor Grinding Head

10" floor grinding heads are designed for smoothing rough areas in quickest time, and giving optimum performance in concrete preparation, leveling concrete surface and removal of various thin coatings

Diameter	Segments	Code
10"(250mm)	20	FGH 250 BAR

Segment Height:10mm



Diameter	Segments	Code
10"(250mm)	20	FGH 250 ARR

Segment Height:8mm



Diameter	Segments	Code
10"(250mm)	16	FGH 250 PCD

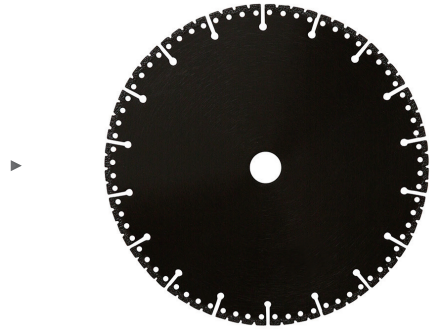


## 5. RESCUE BLADES

Rescue blades or called multi-purpose blades, which is by vacuum brazed technology, the diamond particles are fused directly to the steel core creating the strongest heat resistant bond available when cutting without water cooling;

One blade for all cut, superior cutting efficiency in all types of materials such as steel, concrete, rebar, masonry, plastics, stone, wood, ductile iron, PVC, stainless steel, roof decking, etc.

Diameter	Thickness(mm)	Height(mm)	Code
4"(105mm)	2.0	5	RB 0105 ACG
4.5"(115mm)	2.0	5	RB 0115 ACG
5"(125mm)	2.2	5	RB 0125 ACG
6"(150mm)	2.2	5	RB 0150 ACG
7"(180mm)	2.2	5	RB 0180 ACG
9"(230mm)	2.6	5	RB 0230 ACG
12"(300mm)	3.2	5	RB 0300 ACG
14"(350mm)	3.2	5	RB 0350 ACG
16"(400mm)	3.5	5	RB 0400 ACG



# STONE

## 1. STONE DIAMOND SAW BLADES

### 1.1 Diamond Saw Blade for Granite

Diamond saw blades for granite provides high efficiency, precision and chip-free performance in a wide range of granites.

Diameter	Length(mm)	Thickness(mm)	Height(mm)	Code
12"(300mm)	40	3.2	10/12/15	GRA 0300
14"(350mm)	40	3.2	10/12/15	GRA 0350
16"(400mm)	40	3.6	10/12/15	GRA 0400
18"(450mm)	40	4.2	10/12/15	GRA 0450
20"(500mm)	40	4.2	10/12/15	GRA 0500
24"(600mm)	40	4.6	10/12/15	GRA 0600
28"(700mm)	40	5.0	10/12/15	GRA 0700
32"(800mm)	40	5.5	10/12/15	GRA 0800

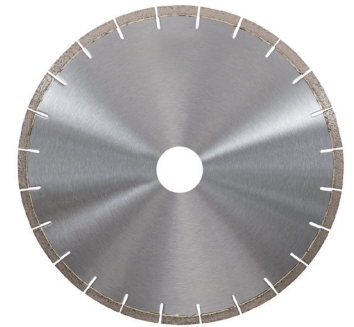
\*Silent and non-silent blades are available



### 1.2 Diamond Saw Blade for Marble

Diamond saw blades for marble provides high efficiency, precision and chip-free performance in a wide range of marbles.

Diameter	Length(mm)	Thickness(mm)	Height(mm)	Code
12"(300mm)	40	3.0	10	MAR 0300
14"(350mm)	40	3.0	10	MAR 0350
16"(400mm)	40	3.6	10	MAR 0400
18"(450mm)	40	4.2	10	MAR 0450
20"(500mm)	40	4.2	10	MAR 0500
24"(600mm)	40	4.8	10	MAR 0600
28"(700mm)	40	5.2	10	MAR 0700
32"(800mm)	40	6.0	10	MAR 0800



### 1.3 Diamond Saw Blade for Ceramic Tile

Diameter	Length(mm)	Thickness(mm)	Height(mm)	Code
7"(180mm)	43	2.0	10	CER 0180
8"(200mm)	43	2.0	10	CER 0200
9"(230mm)	43	2.0	10	CER 0230
10"(250mm)	43	2.0	10	CER 0250
12"(300mm)	43	2.2	10	CER 0300
14"(350mm)	43	2.4	10	CER 0350



## 2. DIAMOND RESIN POLISHING PADS

### 2.1 Wet Polishing Pad

Main use for granite, marble, engineered stone surfaces, high gloss finish in short time and long life.

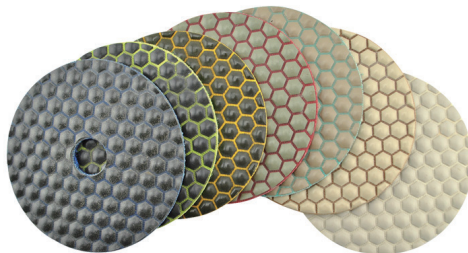


▲

Diameter	Grit	Code
3"(80mm)	50/100/200/400/800/1500/3000	RES 080 WP
4"(100mm)	50/100/200/400/800/1500/3000	RES 0100 WP
5"(125mm)	50/100/200/400/800/1500/3000	RES 0125 WP

### 2.2 Dry Polishing Pad

Use for stone material polish, more faster polish than most of the dry pads



▲

Diameter	Grit	Code
4"(100mm)	50/100/200/400/800/1500/3000	RES 0100 DP

### 3. CORE DRILL BITS

#### Vacuum Brazed Core Drill Bits

Vacuum Brazed Core Drill Bits are mainly used to drill granite, marble, hard porcelain and tiles, with years of research and application of drilling bit and the word advanced technology of diamond brazing. This bit is characterized in very free cutting, high efficiency, excellent performance and long working life.

Diameter(mm)	Grit(mm)	Shank	Code
5	35/40	M14/5-8"-11	KZT 05
6	35/40	M14/5-8"-11	KZT 06
8	35/40	M14/5-8"-11	KZT 08
10	35/40	M14/5-8"-11	KZT 10
12	35/40	M14/5-8"-11	KZT 12
15	35/40	M14/5-8"-11	KZT 15
20	35/40	M14/5-8"-11	KZT 20
25	35/40	M14/5-8"-11	KZT 25
28	35/40	M14/5-8"-11	KZT 28
30	35/40	M14/5-8"-11	KZT 30
32	35/40	M14/5-8"-11	KZT 32
35	35/40	M14/5-8"-11	KZT 35
40	35/40	M14/5-8"-11	KZT 40
45	35/40	M14/5-8"-11	KZT 45
50	35/40	M14/5-8"-11	KZT 50
55	35/40	M14/5-8"-11	KZT 55
60	35/40	M14/5-8"-11	KZT 60
65	35/40	M14/5-8"-11	KZT 65
70	35/40	M14/5-8"-11	KZT 70
75	35/40	M14/5-8"-11	KZT 75
80	35/40	M14/5-8"-11	KZT 80
85	35/40	M14/5-8"-11	KZT 85
90	35/40	M14/5-8"-11	KZT 90
95	35/40	M14/5-8"-11	KZT 95
100	35/40	M14/5-8"-11	KZT 100
115	35/40	M14/5-8"-11	KZT 115
120	35/40	M14/5-8"-11	KZT 120



Segment Height:10mm

Diameter(mm)	Grit(mm)	Shank	Code
5	35/40	Hexagon/Round	KZQ 05
6	35/40	Hexagon/Round	KZQ 06
8	35/40	Hexagon/Round	KZQ 08
10	35/40	Hexagon/Round	KZQ 10
12	35/40	Hexagon/Round	KZQ 12



Segment Height:10mm

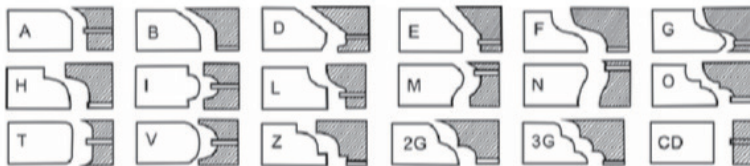
## 4. PROFILE WHEEL

### Vacuum Brazed Profile Wheel

These vacuum brazed diamond profile wheels are designed for fast removal of materials, such as profiling granite, marble and limestone, each wheel has a rubber guide to protect the wheel from marring the material.



AVAILABLE PROFILES



Diameter(mm)	Thread	Thickness(mm)	Gric Size
45-160	M14/5-8"-11or1/2BSP	M14/5-8"-11	20/30/35/45/70/80/140/170

## 5. BUSH HAMMER

### Rotary Bush Hammer

Mainly used for stone finishing way of bush-hammered finish, It works 5~6 times faster than manual processing with high efficiency.

Diameter	No.of Roller	Roller Tips	Code
125mm	3	30	HMR 12503
150mm	4	30	HMR 15004
200mm	4	45	HMR 20004
250mm	5	45	HMR 25005
300mm	6	45	HMR 30006
350mm	8	45	HMR 35008
400mm	9	45	HMR 40009



# Surface Preparation

## 1. DIAMOND GRINDING PLATES

### 1.1 Trapezoid Grinding Plate

The most suitable metal bond diamond grinding plates specifically for floor surface preparation, quick removal of materials with quality consistency.

16/20# for material removal, 30/40# for rough grinding, 60/80# for medium grinding, 120/150# for fine grinding.

■ = Soft Bond for Hard Concrete    ■ = Medium Bond for General Purpose    ■ = Hard Bond for Soft Concrete

#### Bar Segment Trapezoid Grinding Plate

Segment Size: 40x10x10mm  
Mount: 3 M6 Threaded Holes



Grit	Segment	Code
16/20	Soft	TRP-2BAR-16S
30/40	Soft	TRP-2BAR-30S
60/80	Soft	TRP-2BAR-60S
120/150	Soft	TRP-2BAR-120S



Grit	Segment	Code
16/20	Medium	TRP-2BAR-16M
30/40	Medium	TRP-2BAR-30M
60/80	Medium	TRP-2BAR-60M
120/150	Medium	TRP-2BAR-120M



Grit	Segment	Code
16/20	Hard	TRP-2BAR-16H
30/40	Hard	TRP-2BAR-30H
60/80	Hard	TRP-2BAR-60H
120/150	Hard	TRP-2BAR-120H



**Splayed Bar Segment Trapezoid Grinding Plate**

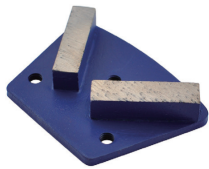
Segment Size: 40x10x10mm  
Mount: 3 M6 Threaded Holes



Grit	Segment	Code
16/20	Soft	TRP-2OSB-16S
30/40	Soft	TRP-2OSB-30S
60/80	Soft	TRP-2OSB-60S
120/150	Soft	TRP-2OSB-120S



Grit	Segment	Code
16/20	Medium	TRP-2OSB-16M
30/40	Medium	TRP-2OSB-30M
60/80	Medium	TRP-2OSB-60M
120/150	Medium	TRP-2OSB-120M



Grit	Segment	Code
16/20	Hard	TRP-2OSB-16H
30/40	Hard	TRP-2OSB-30H
60/80	Hard	TRP-2OSB-60H
120/150	Hard	TRP-2OSB-120H

**Round Segment Trapezoid Grinding Plate**

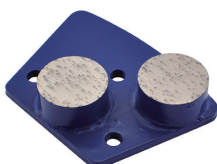
Segment Size: 25x12mm  
Mount: 3 M6 Threaded Holes



Grit	Segment	Code
16/20	Soft	TRP-2RO-16S
30/40	Soft	TRP-2RO-30S
60/80	Soft	TRP-2RO-60S
120/150	Soft	TRP-2RO-120S



Grit	Segment	Code
16/20	Medium	TRP-2RO-16M
30/40	Medium	TRP-2RO-30M
60/80	Medium	TRP-2RO-60M
120/150	Medium	TRP-2RO-120M



Grit	Segment	Code
16/20	Hard	TRP-2RO-16H
30/40	Hard	TRP-2RO-30H
60/80	Hard	TRP-2RO-60H
120/150	Hard	TRP-2RO-120H

**Round Segment Trapezoid Grinding Plate**

Segment Size: 25x12mm

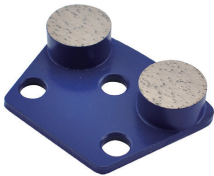
Mount: Magnetic Type



Grit	Segment	Code
16/20	Soft	TRP-2MRO-16S
30/40	Soft	TRP-2MRO-30S
60/80	Soft	TRP-2MRO-60S
120/150	Soft	TRP-2MRO-120S



Grit	Segment	Code
16/20	Medium	TRP-2MRO-16M
30/40	Medium	TRP-2MRO-30M
60/80	Medium	TRP-2MRO-60M
120/150	Medium	TRP-2MRO-120M



Grit	Segment	Code
16/20	Hard	TRP-2MRO-16H
30/40	Hard	TRP-2MRO-30H
60/80	Hard	TRP-2MRO-60H
120/150	Hard	TRP-2MRO-120H

**Triple Round Segment Trapezoid Grinding Plate**

Segment Size: 20x10mm

Mount: 3 M6 Threaded Holes



Grit	Segment	Code
16/20	Soft	TRP-3RO-16S
30/40	Soft	TRP-3RO-30S
60/80	Soft	TRP-3RO-60S
120/150	Soft	TRP-3RO-120S



Grit	Segment	Code
16/20	Medium	TRP-3RO-16M
30/40	Medium	TRP-3RO-30M
60/80	Medium	TRP-3RO-60M
120/150	Medium	TRP-3RO-120M



Grit	Segment	Code
16/20	Hard	TRP-3RO-16H
30/40	Hard	TRP-3RO-30H
60/80	Hard	TRP-3RO-60H
120/150	Hard	TRP-3RO-120H

**Arrow Segment Trapezoid Grinding Plate**

Segment Size: 15mm width x 8mm height

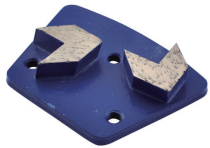
Mount: 3 M6 Threaded Holes



Grit	Segment	Code
16/20	Soft	TRP-2ARW-16S
30/40	Soft	TRP-2ARW-30S
60/80	Soft	TRP-2ARW-60S
120/150	Soft	TRP-2ARW-120S



Grit	Segment	Code
16/20	Medium	TRP-2ARW-16M
30/40	Medium	TRP-2ARW-30M
60/80	Medium	TRP-2ARW-60M
120/150	Medium	TRP-2ARW-120M



Grit	Segment	Code
16/20	Hard	TRP-2ARW-16H
30/40	Hard	TRP-2ARW-30H
60/80	Hard	TRP-2ARW-60H
120/150	Hard	TRP-2ARW-120H

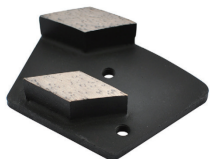
**Rhombus Segment Trapezoid Grinding Plate**

Segment Size: 20mm width x 11mm height

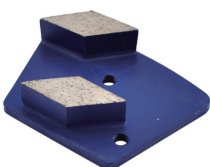
Mount: 3 M6 Threaded Holes



Grit	Segment	Code
16/20	Soft	TRP-2RHM-16S
30/40	Soft	TRP-2RHM-30S
60/80	Soft	TRP-2RHM-60S
120/150	Soft	TRP-2RHM-120S



Grit	Segment	Code
16/20	Medium	TRP-2RHM-16M
30/40	Medium	TRP-2RHM-30M
60/80	Medium	TRP-2RHM-60M
120/150	Medium	TRP-2RHM-120M



Grit	Segment	Code
16/20	Hard	TRP-2RHM-16H
30/40	Hard	TRP-2RHM-30H
60/80	Hard	TRP-2RHM-60H
120/150	Hard	TRP-2RHM-120H

## 1.2 Quick Change Grinding Plate

We manufacture premium quality diamond grinding plates which suitable for Husqvarna, Lavina, HTC etc floor grinders.

With improved diamonds, gives operators spending less time on site, cutting fast, more aggressive and save your budget.

■ = Soft Bond for Hard Concrete    ■ Medium Bond for General Purpose    ■ = Hard Bond for Soft Concrete

### Bar Segment Grinding Plate for Husqvarna

Segment Size: 40x10x10mm  
Suitable for Husqvarna Grinder

	Grit	Segment	Code
	16/20	Soft	HUS-2BAR-16S
	30/40	Soft	HUS-2BAR-30S
	60/80	Soft	HUS-2BAR-60S
	Grit	Segment	Code
	16/20	Medium	HUS-2BAR-16M
	30/40	Medium	HUS-2BAR-30M
	60/80	Medium	HUS-2BAR-60M
	Grit	Segment	Code
	16/20	Hard	HUS-2BAR-16H
	30/40	Hard	HUS-2BAR-30H
	60/80	Hard	HUS-2BAR-60H
	Grit	Segment	Code
	120/150	Soft	HUS-2BAR-120S
	Grit	Segment	Code
	120/150	Medium	HUS-2BAR-120M
	Grit	Segment	Code
	120/150	Hard	HUS-2BAR-120H

### Round Segment Grinding Plate for Husqvarna

Segment Size: 25x12mm  
Suitable for Husqvarna Grinder

	Grit	Segment	Code
	16/20	Soft	HUS-2RO-16S
	30/40	Soft	HUS-2RO-30S
	60/80	Soft	HUS-2RO-60S
	Grit	Segment	Code
	120/150	Soft	HUS-2RO-120S
	16/20	Medium	HUS-2RO-16M
	30/40	Medium	HUS-2RO-30M
	60/80	Medium	HUS-2RO-60M
	120/150	Medium	HUS-2RO-120M
	Grit	Segment	Code
	16/20	Hard	HUS-2RO-16H
	30/40	Hard	HUS-2RO-30H
	60/80	Hard	HUS-2RO-60H
	120/150	Hard	HUS-2RO-120H

### Rhombus Segment Grinding Plate for Husqvarna

Segment Size: 20mm width x 11mm height


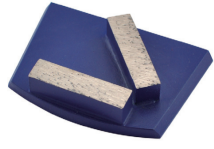
Suitable for Husqvarna Floor Grinder

	Grit	Segment	Code
	16/20	Soft	HUS-2RHM-16S
	30/40	Soft	HUS-2RHM-30S
	60/80	Soft	HUS-2RHM-60S
	Grit	Segment	Code
	16/20	Medium	HUS-2RHM-16M
	30/40	Medium	HUS-2RHM-30M
	60/80	Medium	HUS-2RHM-60M
	Grit	Segment	Code
	16/20	Hard	HUS-2RHM-16H
	30/40	Hard	HUS-2RHM-30H
	60/80	Hard	HUS-2RHM-60H
	120/150	Hard	HUS-2RHM-120H

### Bar Segment Grinding Plate for Lavina

Segment Size: 40x10x10mm

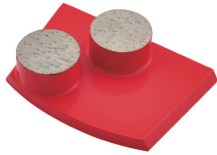
Suitable for Lavina Floor Grinder

	Grit	Segment	Code
	16/20	Soft	LAV-2BAR-16S
	30/40	Soft	LAV-2BAR-30S
	60/80	Soft	LAV-2BAR-60S
	Grit	Segment	Code
	16/20	Medium	LAV-2BAR-16M
	30/40	Medium	LAV-2BAR-30M
	60/80	Medium	LAV-2BAR-60M
	Grit	Segment	Code
	16/20	Hard	LAV-2BAR-16H
	30/40	Hard	LAV-2BAR-30H
	60/80	Hard	LAV-2BAR-60H
	120/150	Hard	LAV-2BAR-120H

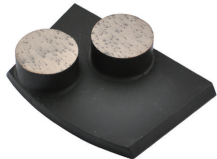
**Round Segment Grinding Plate for Lavina**

Segment Size: 25x12mm

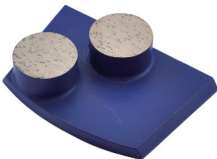
Suitable for Lavina Floor Grinder



Grit	Segment	Code
16/20	Soft	LAV-2RO-16S
30/40	Soft	LAV-2RO-30S
60/80	Soft	LAV-2RO-60S
120/150	Soft	LAV-2RO-120S



Grit	Segment	Code
16/20	Medium	LAV-2RO-16M
30/40	Medium	LAV-2RO-30M
60/80	Medium	LAV-2RO-60M
120/150	Medium	LAV-2RO-120M



Grit	Segment	Code
16/20	Hard	LAV-2RO-16H
30/40	Hard	LAV-2RO-30H
60/80	Hard	LAV-2RO-60H
120/150	Hard	LAV-2RO-120H

**Bar Segment Grinding Plate for Lavina**

Segment Size: 40x10x10mm

Suitable for All Lavina Floor Grinder, Includes new Latest Models.



16/20	Soft	NLV-2BAR-16S
30/40	Soft	NLV-2BAR-30S
60/80	Soft	NLV-2BAR-60S
120/150	Soft	NLV-2BAR-120S



Grit	Segment	Code
16/20	Medium	NLV-2BAR-16M
30/40	Medium	NLV-2BAR-30M
60/80	Medium	NLV-2BAR-60M
120/150	Medium	NLV-2BAR-120M

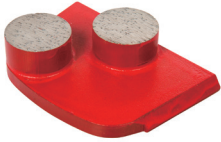


Grit	Segment	Code
16/20	Hard	NLV-2BAR-16H
30/40	Hard	NLV-2BAR-30H
60/80	Hard	NLV-2BAR-60H
120/150	Hard	NLV-2BAR-120H

**Round Segment Grinding Plate for Lavina**

Segment Size: 25x12mm

Suitable for All Lavina Floor Grinder, Includes new Latest Models.



Grit	Segment	Code
16/20	Soft	NLV-2RO-16S
30/40	Soft	NLV-2RO-30S
60/80	Soft	NLV-2RO-60S
120/150	Soft	NLV-2RO-120S



Grit	Segment	Code
16/20	Medium	NLV-2RO-16M
30/40	Medium	NLV-2RO-30M
60/80	Medium	NLV-2RO-60M
120/150	Medium	NLV-2RO-120M



Grit	Segment	Code
16/20	Hard	NLV-2RO-16H
30/40	Hard	NLV-2RO-30H
60/80	Hard	NLV-2RO-60H
120/150	Hard	NLV-2RO-120H

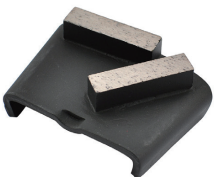
**Bar Segment Grinding Plate for HTC**

Segment Size: 40x10x10mm

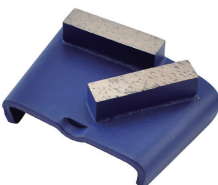
Suitable for HTC Floor Grinder



Grit	Segment	Code
16/20	Soft	HTC-2BAR-16S
30/40	Soft	HTC-2BAR-30S
60/80	Soft	HTC-2BAR-60S
120/150	Soft	HTC-2BAR-120S



Grit	Segment	Code
16/20	Medium	HTC-2BAR-16M
30/40	Medium	HTC-2BAR-30M
60/80	Medium	HTC-2BAR-60M
120/150	Medium	HTC-2BAR-120M



Grit	Segment	Code
16/20	Hard	HTC-2BAR-16H
30/40	Hard	HTC-2BAR-30H
60/80	Hard	HTC-2BAR-60H
120/150	Hard	HTC-2BAR-120H

**Round Segment Grinding Plate for HTC**

Segment Size: 25x12mm  
Suitable for HTC Floor Grinder



Grit	Segment	Code
16/20	Soft	HTC-2RO-16S
30/40	Soft	HTC-2RO-30S
60/80	Soft	HTC-2RO-60S
120/150	Soft	HTC-2RO-120S



Grit	Segment	Code
16/20	Medium	HTC-2RO-16M
30/40	Medium	HTC-2RO-30M
60/80	Medium	HTC-2RO-60M
120/150	Medium	HTC-2RO-120M



Grit	Segment	Code
16/20	Hard	HTC-2RO-16H
30/40	Hard	HTC-2RO-30H
60/80	Hard	HTC-2RO-60H
120/150	Hard	HTC-2RO-120H

**Arrow Segment Grinding Plate for HTC**

Segment Size: 15mm Width x 8mm height  
Suitable for HTC Floor Grinder



Grit	Segment	Code
16/20	Soft	HTC-2ARW-16S
30/40	Soft	HTC-2ARW-30S
60/80	Soft	HTC-2ARW-60S
120/150	Soft	HTC-2ARW-120S



Grit	Segment	Code
16/20	Medium	HTC-2ARW-16M
30/40	Medium	HTC-2ARW-30M
60/80	Medium	HTC-2ARW-60M
120/150	Medium	HTC-2ARW-120M

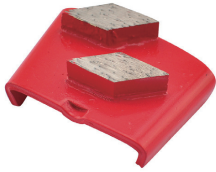


Grit	Segment	Code
16/20	Hard	HTC-2ARW-16H
30/40	Hard	HTC-2ARW-30H
60/80	Hard	HTC-2ARW-60H
120/150	Hard	HTC-2ARW-120H

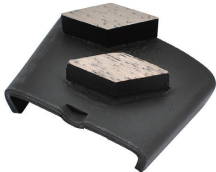


### Rhombus Segment Grinding Plate for HTC

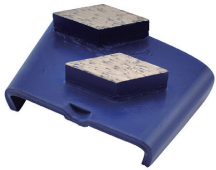
Segment Size: 20mm width x 11mm height  
Suitable for HTC Floor Grinder



Grit	Segment	Code
16/20	Soft	HTC-2RHM-16S
30/40	Soft	HTC-2RHM-30S
60/80	Soft	HTC-2RHM-60S
120/150	Soft	HTC-2RHM-120S



Grit	Segment	Code
16/20	Medium	HTC-2RHM-16M
30/40	Medium	HTC-2RHM-30M
60/80	Medium	HTC-2RHM-60M
120/150	Medium	HTC-2RHM-120M



Grit	Segment	Code
16/20	Hard	HTC-2RHM-16H
30/40	Hard	HTC-2RHM-30H
60/80	Hard	HTC-2RHM-60H
120/150	Hard	HTC-2RHM-120H

### Bar Segment Fast Change Grinding Plate

Segment Size: 40x10x10mm  
Suitable for most Floor Grinders



Grit	Segment	Code
16/20	Soft	FRK-2BAR-16S
30/40	Soft	FRK-2BAR-30S
60/80	Soft	FRK-2BAR-60S
120/150	Soft	FRK-2BAR-120S



Grit	Segment	Code
16/20	Medium	FRK-2BAR-16M
30/40	Medium	FRK-2BAR-30M
60/80	Medium	FRK-2BAR-60M
120/150	Medium	FRK-2BAR-120M



Grit	Segment	Code
16/20	Hard	FRK-2BAR-16H
30/40	Hard	FRK-2BAR-30H
60/80	Hard	FRK-2BAR-60H
120/150	Hard	FRK-2BAR-120H

**Round Segment Fast Change Grinding Plate**

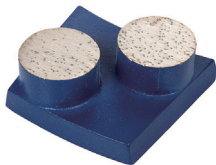
Segment Size: 25x12mm  
Suitable for most Floor Grinders



Grit	Segment	Code
16/20	Soft	FRK-2RO-16S
30/40	Soft	FRK-2RO-30S
60/80	Soft	FRK-2RO-60S
120/150	Soft	FRK-2RO-120S



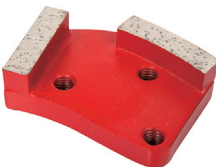
Grit	Segment	Code
16/20	Medium	FRK-2RO-16M
30/40	Medium	FRK-2RO-30M
60/80	Medium	FRK-2RO-60M
120/150	Medium	FRK-2RO-120M



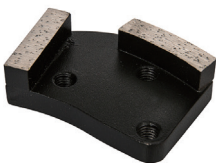
Grit	Segment	Code
16/20	Hard	FRK-2RO-16H
30/40	Hard	FRK-2RO-30H
60/80	Hard	FRK-2RO-60H
120/150	Hard	FRK-2RO-120H

**Bar Segment Grinding Plate for CONTEC**

Segment Size: 40x10x10mm  
3 M8 Threaded Holes  
Suitable for Contec Floor Grinder



Grit	Segment	Code
16/20	Soft	CON-2BAR-16S
30/40	Soft	CON-2BAR-30S
60/80	Soft	CON-2BAR-60S
120/150	Soft	CON-2BAR-120S



Grit	Segment	Code
16/20	Medium	CON-2BAR-16M
30/40	Medium	CON-2BAR-30M
60/80	Medium	CON-2BAR-60M
120/150	Medium	CON-2BAR-120M



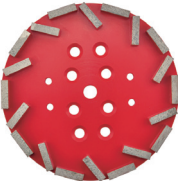

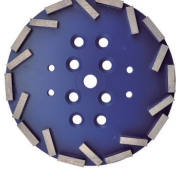
Grit	Segment	Code
16/20	Hard	CON-2BAR-16H
30/40	Hard	CON-2BAR-30H
60/80	Hard	CON-2BAR-60H
120/150	Hard	CON-2BAR-120H

### 1.3 10" Floor Grinding Plate/Head




10" floor grinding plates are designed for smoothing rough areas in quickest time, And giving optimum performance in concrete preparation, leveling concrete surface and removal of various thin coatings.

■ = Soft Bond for Hard Concrete    ■ = Medium Bond for General Purpose    ■ = Hard Bond for Soft Concrete

**Bar Segment 10" Grinding Plate, 20 Segments**  
 Diameter: 10"(250mm)  
 Segment Size: 40x10x10mm  
 Mount: 4 Bolt

		Grit	Segment	Code
	◀	16/20	Soft	GRIND-25020BAR-16S
		30/40	Soft	GRIND-25020BAR-30S
		60/80	Soft	GRIND-25020BAR-60S
		120/150	Soft	GRIND-25020BAR-120S
		Grit	Segment	Code
	◀	16/20	Medium	GRIND-25020BAR-16M
		30/40	Medium	GRIND-25020BAR-30M
		60/80	Medium	GRIND-25020BAR-60M
		120/150	Medium	GRIND-25020BAR-120M
		Grit	Segment	Code
	◀	16/20	Hard	GRIND-25020BAR-16H
		30/40	Hard	GRIND-25020BAR-30H
		60/80	Hard	GRIND-25020BAR-60H
		120/150	Hard	GRIND-25020BAR-120H

**Arrow Segment 10" Grinding Plate, 20 Segments**  
 Diameter: 10"(250mm)  
 Segment Size: 15mm edge x 8mm height  
 Mount: 4 Bolt

		Grit	Segment	Code
	◀	16/20	Soft	GRIND-25020ARW-16S
		30/40	Soft	GRIND-25020ARW-30S
		60/80	Soft	GRIND-25020ARW-60S
		120/150	Soft	GRIND-25020ARW-120S
		Grit	Segment	Code
	◀	16/20	Medium	GRIND-25020ARW-16M
		30/40	Medium	GRIND-25020ARW-30M
		60/80	Medium	GRIND-25020ARW-60M
		120/150	Medium	GRIND-25020ARW-120M
		Grit	Segment	Code
	◀	16/20	Hard	GRIND-25020ARW-16H
		30/40	Hard	GRIND-25020ARW-30H
		60/80	Hard	GRIND-25020ARW-60H
		120/150	Hard	GRIND-25020ARW-120H

## 1.4 PCD Grinding Plate

PCD (Polycrystalline Diamond) is synthetic diamond that is used in non-ferrous application, has superior hardness, high fracture strength and uniformed properties, as well as excellent wear resistance and high thermal conductivity. The PCD grinding plates are designed for the quick removal of the thick coating of epoxy, glue, paint and resin on concrete floors, these tools provide a smooth finish to any concrete surface and works much faster than general metal bond diamond grinding tools.



Direction	Code
Clockwise	TRP-010PCD-R
Anti-clockwise	TRP-010PCD-L



Direction	Code
Clockwise	TRP-020PCD-R
Anti-clockwise	TRP-020PCD-L



Direction	Code
Clockwise	TRP-030PCD-R
Anti-clockwise	TRP-030PCD-L



Direction	Code
Clockwise	LAV-010PCD-R
Anti-clockwise	LAV-010PCD-L



Direction	Code
Clockwise	FRK-010PCD-R
Anti-clockwise	FRK-010PCD-L

## 2. DIAMOND GRINDING PUCKS

These diamond grinding pucks are suitable for Prep/Master, etc. floor grinders, with improved diamonds give operator spending less time on site, cutting fast, more aggressive and save your budget.

■ = Soft Bond for Hard Concrete    ■ = Medium Bond for General Purpose    ■ = Hard Bond for Soft Concrete



POST BACK

**SP Diamond Grinding Puck, 10 Segments**

Diameter: 3"(78mm)

Segment Type: Non-Beveled edge

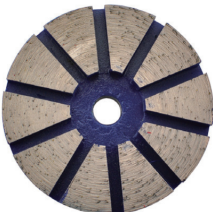
Segment Height: 8mm



Grit	Segment	Code
16/20	Soft	PUCK-7810SP-16S
30/40	Soft	PUCK-7810SP-30S
60/80	Soft	PUCK-7810SP-60S
120/150	Soft	PUCK-7810SP-120S



Grit	Segment	Code
16/20	Medium	PUCK-7810SP-16M
30/40	Medium	PUCK-7810SP-30M
60/80	Medium	PUCK-7810SP-60M
120/150	Medium	PUCK-7810SP-120M



Grit	Segment	Code
16/20	Hard	PUCK-7810SP-16H
30/40	Hard	PUCK-7810SP-30H
60/80	Hard	PUCK-7810SP-60H
120/150	Hard	PUCK-7810SP-120H



## 2-LCOK BACK

### DL Diamond Grinding Puck, 10 Segments

Diameter: 3"(78mm)  
Segment Type: Beveled edge  
Segment Height: 8mm



Grit	Segment	Code
16/20	Soft	PUCK-7810DL-16S
30/40	Soft	PUCK-7810DL-30S
60/80	Soft	PUCK-7810DL-60S
120/150	Soft	PUCK-7810DL-120S



Grit	Segment	Code
16/20	Medium	PUCK-7810DL-16M
30/40	Medium	PUCK-7810DL-30M
60/80	Medium	PUCK-7810DL-60M
120/150	Medium	PUCK-7810DL-120M



Grit	Segment	Code
16/20	Hard	PUCK-7810DL-16H
30/40	Hard	PUCK-7810DL-30H
60/80	Hard	PUCK-7810DL-60H
120/150	Hard	PUCK-7810DL-120H



## MULTI CONFIG

### MC Diamond Grinding Puck, 10 Segments

Diameter: 3"(78mm)  
Segment Type: Beveled edge  
Segment Height: 8mm



Grit	Segment	Code
16/20	Soft	PUCK-7810MC-16S
30/40	Soft	PUCK-7810MC-30S
60/80	Soft	PUCK-7810MC-60S
120/150	Soft	PUCK-7810MC-120S



Grit	Segment	Code
16/20	Medium	PUCK-7810MC-16M
30/40	Medium	PUCK-7810MC-30M
60/80	Medium	PUCK-7810MC-60M
120/150	Medium	PUCK-7810MC-120M



Grit	Segment	Code
16/20	Hard	PUCK-7810MC-16H
30/40	Hard	PUCK-7810MC-30H
60/80	Hard	PUCK-7810MC-60H
120/150	Hard	PUCK-7810MC-120H

### 3. DIAMOND GRINDING PLUGS

Diamond grinding plug provide fast removing and resurfacing for concrete surfaces, coatings, glues and epoxies, fit all plug terrazzo grinding machines.

■ = Soft Bond for Hard Concrete    ■ = Medium Bond for General Purpose    ■ = Hard Bond for Soft Concrete

**Solid Segment Diamond Grinding Plug**

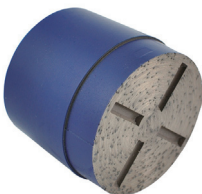
Diameter: 2" (50mm)  
Segment Height: 10mm



Grit	Segment	Code
16/20	Soft	PLUG-5010SLD-16S
30/40	Soft	PLUG-5010SLD-30S
60/80	Soft	PLUG-5010SLD-60S
120/150	Soft	PLUG-5010SLD-120S



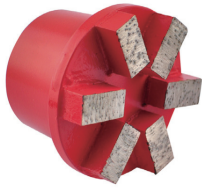
Grit	Segment	Code
16/20	Medium	PLUG-5010SLD-16M
30/40	Medium	PLUG-5010SLD-30M
60/80	Medium	PLUG-5010SLD-60M
120/150	Medium	PLUG-5010SLD-120M



Grit	Segment	Code
16/20	Hard	PLUG-5010SLD-16H
30/40	Hard	PLUG-5010SLD-30H
60/80	Hard	PLUG-5010SLD-60H
120/150	Hard	PLUG-5010SLD-120H

**Bar Segment Diamond Grinding Plug, 6 Segments**

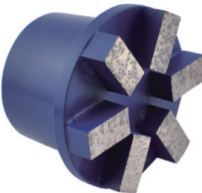
Diameter: 3"(75mm)  
Segment Height: 10mm



Grit	Segment	Code
16/20	Soft	PLUG-7506BAR-16S
30/40	Soft	PLUG-7506BAR-30S
60/80	Soft	PLUG-7506BAR-60S
120/150	Soft	PLUG-7506BAR-120S



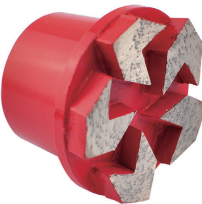
Grit	Segment	Code
16/20	Medium	PLUG-7506BAR-16M
30/40	Medium	PLUG-7506BAR-30M
60/80	Medium	PLUG-7506BAR-60M
120/150	Medium	PLUG-7506BAR-120M



Grit	Segment	Code
16/20	Hard	PLUG-7506BAR-16H
30/40	Hard	PLUG-7506BAR-30H
60/80	Hard	PLUG-7506BAR-60H
120/150	Hard	PLUG-7506BAR-120H

**Arrow Segment Diamond Grinding Plug, 5 Segments**

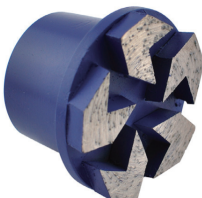
Diameter: 3"(75mm)  
Segment Height: 8mm



Grit	Segment	Code
16/20	Soft	PLUG-7505ARW-16S
30/40	Soft	PLUG-7505ARW-30S
60/80	Soft	PLUG-7505ARW-60S
120/150	Soft	PLUG-7505ARW-120S



Grit	Segment	Code
16/20	Medium	PLUG-7505ARW -16M
30/40	Medium	PLUG-7505ARW -30M
60/80	Medium	PLUG-7505ARW -60M
120/150	Medium	PLUG-7505ARW -120M



Grit	Segment	Code
16/20	Hard	PLUG-7505ARW -16H
30/40	Hard	PLUG-7505ARW -30H
60/80	Hard	PLUG-7505ARW -60H
120/150	Hard	PLUG-7505ARW -120H



## 4. FLOOR POSLISHING PADS

### Resin Bond Polishing pads

Velcro back resin floor pads, they are fit all planetary head of grinder and polisher, good for riding lippage and also good for removing slurry.

Fast and high gloss finish, suitable for concrete and stone polishing.



**Turtle Resin Pad**  
Size:3", Thickness:10mm  
Wet or Dry Use

Grit	Size	Code
50	3"	FLP-7610TUR-0050
100	3"	FLP-7610TUR-0100
200	3"	FLP-7610TUR-0200
400	3"	FLP-7610TUR-0400
800	3"	FLP-7610TUR-0800
1500	3"	FLP-7610TUR-1500
3000	3"	FLP-7610TUR-3000



**Wiggly Turtle Resin Pad**  
Size:3", Thickness:10mm  
Wet or Dry Use

Grit	Size	Code
50	3"	FLP-7610WTUR-0050
100	3"	FLP-7610WTUR-0100
200	3"	FLP-7610WTUR-0200
400	3"	FLP-7610WTUR-0400
800	3"	FLP-7610WTUR-0800
1500	3"	FLP-7610WTUR-1500
3000	3"	FLP-7610WTUR-3000



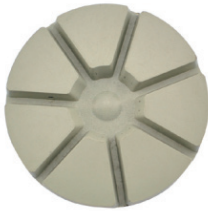
**Pound Sign Resin Pad**  
Size:3", Thickness:10mm  
Wet or Dry Use

Grit	Size	Code
50	3"	FLP-7610PUD-0050
100	3"	FLP-7610PUD-0100
200	3"	FLP-7610PUD-0200
400	3"	FLP-7610PUD-0400
800	3"	FLP-7610PUD-0800
1500	3"	FLP-7610PUD-1500
3000	3"	FLP-7610PUD-3000



**Snowflake Resin Pad**  
Size:3",Thickness:10mm  
Wet or Dry Use

Grit	Size	Code
50	3"	FLP-7610SNF-0050
100	3"	FLP-7610SNF-0100
200	3"	FLP-7610SNF-0200
400	3"	FLP-7610SNF-0400
800	3"	FLP-7610SNF-0800
1500	3"	FLP-7610SNF-1500
3000	3"	FLP-7610SNF-3000



**White Flame Resin Pad/Premium**  
Size:3",Thickness:10mm  
Wet or Dry Use

Grit	Size	Code
50	3"	FLP-8010WTF-0050
100	3"	FLP-8010WTF-0100
200	3"	FLP-8010WTF-0200
400	3"	FLP-8010WTF-0400
800	3"	FLP-8010WTF-0800
1500	3"	FLP-8010WTF-1500
3000	3"	FLP-8010WTF-3000



**Sparky Flower Resin Pad**  
Size:3",Thickness:10mm  
Wet or Dry Use

Grit	Size	Code
50	3"	FLP-7306SFLR-0050
100	3"	FLP-7306SFLR-0100
200	3"	FLP-7306SFLR-0200
400	3"	FLP-7306SFLR-0400
800	3"	FLP-7306SFLR-0800
1500	3"	FLP-7306SFLR-1500
3000	3"	FLP-7306SFLR-3000

## 5. OTHERS PARTS

### 5.1 Tungsten Carbide Tipped Cutter

Hardened steel with tungsten carbide inserts for all concrete texturing, scabbling, planing and grooving applications. Also used for the removal of road markings, roof chippings and brittle coatings.



Diameter	Bore	Thickness	Teeth	Code
42mm	16mm	6mm	5	STC421605
46mm	16mm	6mm	6	STC461606
56mm	18mm	6mm	6	STC561806
56mm	20mm	6mm	6	STC562006
56mm	25mm	6mm	6	STC562506
58mm	16mm	6mm	8	STC581608
58mm	18mm	6mm	8	STC581808
58mm	20mm	6mm	8	STC582008
58mm	25mm	6mm	8	STC582508
80mm	26mm	8mm	8	STC802608
80mm	30mm	8mm	8	STC803008
80mm	26mm	8mm	12	STC802612
80mm	30mm	8mm	12	STC803012

### 5.2 Milling Cutter

Tungsten carbide tipped cutter for the removal of thermoplastic road and runway markings, bituminous and rubber deposits, Suit for all types of floor scarifiers/planers



Diameter	Bore	Thickness	Teeth	Code
40mm	15mm	22mm	5	SMC401505
55mm	18mm	19mm	6	SMC551806
55mm	25mm	20mm	6	SMC552506
80mm	30mm	19mm	6	SMC803006

### 5.3 Shot Blasting Wheel Kit

A consumable and wear resistant casting part used in shot blasting machines.







## **Norler Tools Co., Ltd.**

---

Add:NO.418 Road Hui Lan Road Ji Shi Gang Town,  
Ning Bo, Zhe Jiang China 315171

Tel:+86 (574) 58975390 / 58975391

Email:[info@norlertools.com](mailto:info@norlertools.com)

Web:[www.norlertools.com](http://www.norlertools.com)